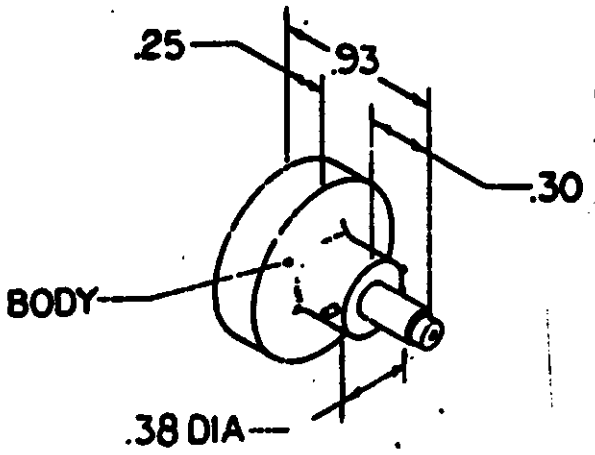
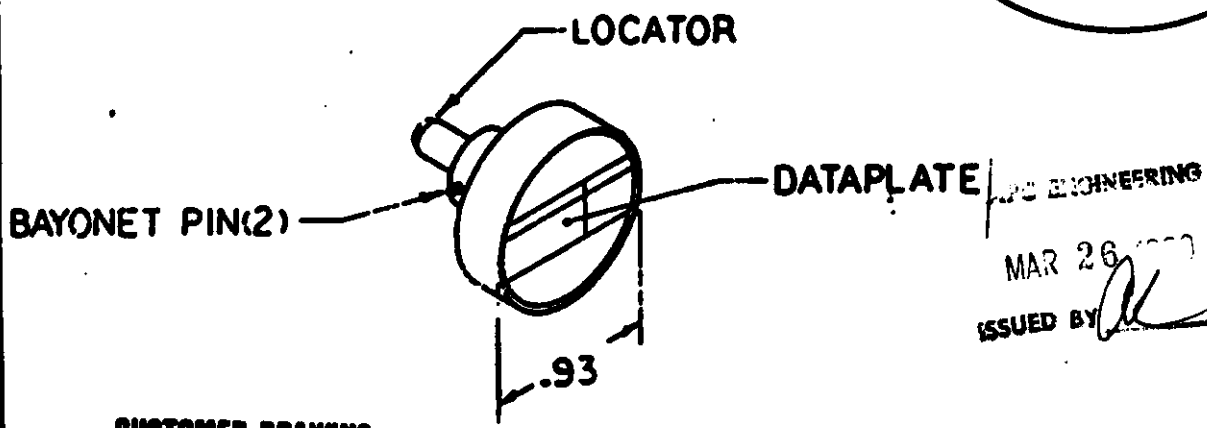


USED ON 601966-1

THIS INFORMATION IS CONFIDENTIAL AND IS EXCLUDED TO YOU ON CONDITION THAT NO FURTHER DISCLOSURE IS MADE BY YOU TO OTHERS WITHOUT WRITTEN AUTHORIZATION FROM AMP PRODUCTS CORP., VALLEY FORGE, PA., U.S.A.



USE WITH CONTACTS		
SEL.	M24308/10-1 M24308/11-1 M28028/11-20-20 M28028/12-20-20	M24308/16A/17 -1 THRU -5 INNER P & S
4	---	RG141A, 142A, 142B, 178B, 180B, 188, 196A, 196A, 303, 316/U
5	24	RG88B, 89C, 223/U
6	22	---
7	20	---



ISSUED BY *[Signature]*  
MAR 26 1988  
FPC ENGINEERING

CUSTOMER DRAWING  
UNPUBLISHED

DO NOT SCALE DRAWING

601966-5		POSITIONER, AS SHOWN		ITEM NO
DWG SIZE	PART NO	DESCRIPTION		ITEM NO
← REVISION OF EACH ASSY NO (WHEN BLANK, USE DWG REVISION)				
QTY REQD PER ASSY		PARTS LIST		
		MATERIAL	HEAT TREAT	FINISH
		---	---	---
		TOLERANCES UNLESS OTHERWISE SPECIFIED:	DR <i>Ray Johnson</i> 6-9-88 APP <i>Ray Johnson</i> 6-9-88 CHK <i>W. Werner</i> 6/2/88 REL <i>F. HARNED</i> 3-20-89	
		DECIMALS: .00 = ± .02. .000 = ± .005. .0000 = ± .0005 ANGLES: ± 0° 30' FRACTIONS: ± 1/64	<b>AMP PRODUCTS CORPORATION</b> Valley Forge, PA 19482 A Subsidiary of AMP Incorporated	
		REMOVE BURRS	NAME	
		SCALE	POSITIONER, K13-1	
O REL DWS 6-9-88 REVISION RECORD		F. 6/88 APP DATE	J DWS NO 601966-5	
P	F	LTR	SHEET	REV
				0

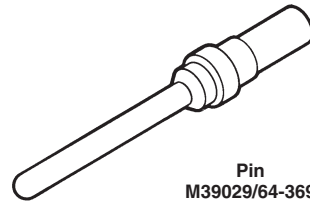
**Note:** All part numbers are RoHS Compliant.

**Signal Contacts** (Continued)

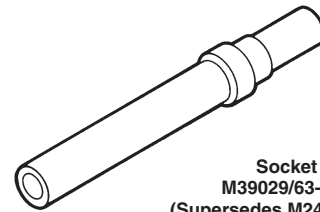
**Size 20 DM, Screw-Machined, Crimp Contacts**

Pin Diameter—.040 [1.02]

**Test Current\***—7.5 amperes (Single contact, free-air test current; not to be construed as contact rating current. Use only for testing.)



**Pin**  
M39029/64-369  
(Supersedes M24308/11-1)



**Socket**  
M39029/63-368  
(Supersedes M24308/10-1)

**Material and Finish**

**Pin Body**—Copper alloy per QQ-B-626

**Socket Body**—Beryllium copper per QQ-C-530

**Socket Sleeve**—Passivated stainless steel per QQ-S-766

**Plating pin and socket body**—.000050-.000100 [0.00127-0.00254] min. gold over .000100-.000150 [0.00254-0.00381] min. copper

Gold plating per MIL-G-45204  
Copper plating per MIL-C-14550

**Type 20 DF, Solder Contacts**

Pin Diameter—.040 [1.02]

**Test Current\***—7.5 amperes (Single contact, free-air test current; not to be construed as contact rating current. Use only for testing.)

**Material and Finish**

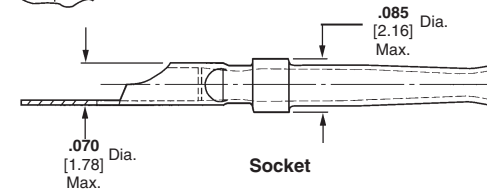
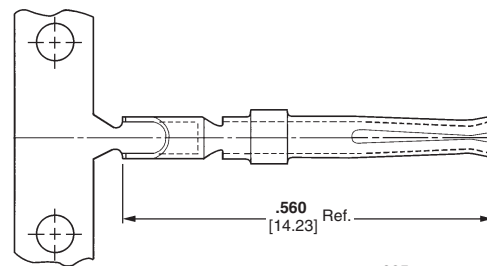
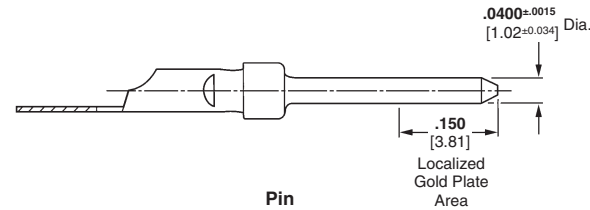
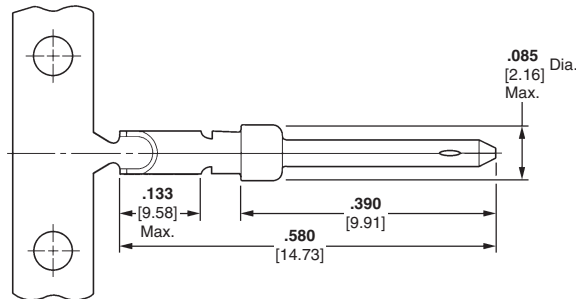
**Pin**—Brass, plated gold flash over nickel on entire contact with additional .000030 [0.00076] min. gold on mating end

**Socket**—Phosphor bronze, plated gold flash over nickel on entire contact with additional .000030 [0.00076] min. gold on mating end

**\*Note:** Total current capacity of each contact in a given connector is dependent on the heat rise resulting from the combination of electrical loads of all contacts in the connector arrangement and the maximum ambient temperature in which the connector will be operating. See page 8.

Wire Size Range <sup>1</sup> AWG mm <sup>2</sup>	Ins. Dia. (Max.)	Contact Configuration	Tape Mounted Contacts <sup>2</sup> Part No.	Loose Piece Contacts		Hand Tool Nos.		Positioner Nos.	
				Military No. (M39029)	Part No.	Military (M22520) Part No.	Part No.	Military (M22520) Part No.	Part No.
24-20	0.2-0.6	Pin	205089-2	64-369	205089-1	02-01	601966-1	2-08	601966-5
	.068 1.73	Socket	205090-2	63-368	205090-1				

<sup>1</sup>Overall insulation crimp diameter, including crimp barrel, must not exceed .125 [3.18].  
<sup>2</sup>.000015 [0.00038] gold in the mating area over .000050 [0.00127] nickel.



Strip Form Contact No.		Loose Piece Contact No.	
Pin	Socket	Pin	Socket
66570-2	66569-2	66570-3	66569-3

**Note:** Contacts to be soldered to wire before being inserted into housing, 18 AWG [0.8 - 0.9 mm<sup>2</sup>] max. wire size.